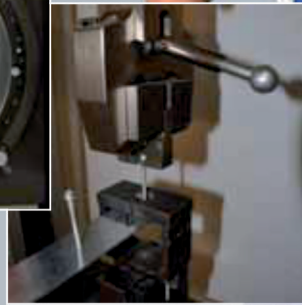
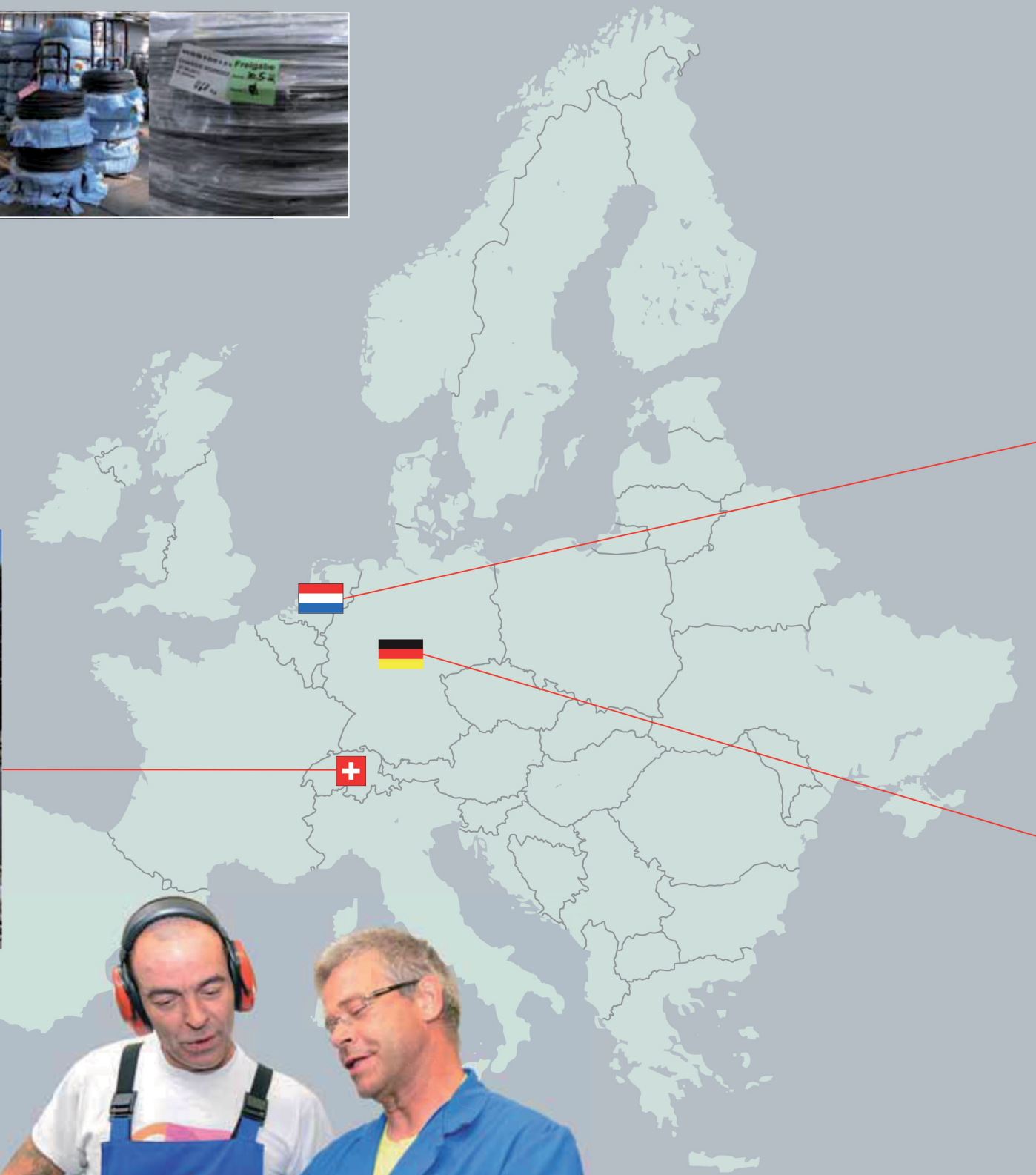




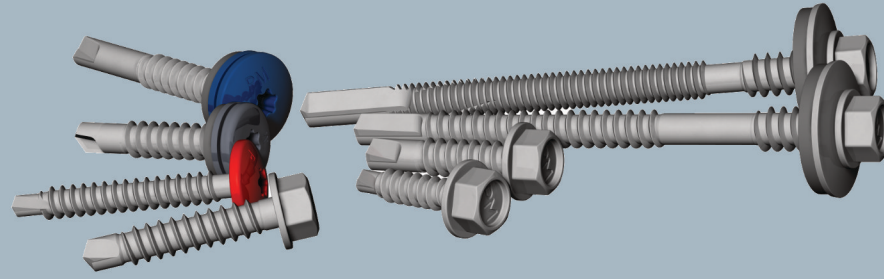
image reflections

[www.pmj-tec.com](http://www.pmj-tec.com)

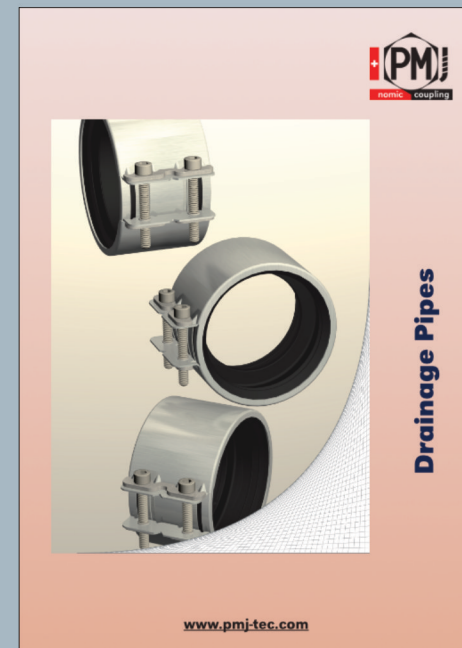
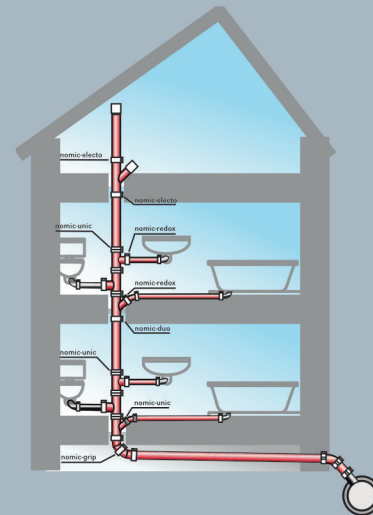


SWISS MADE

LOCAL EXPERTS

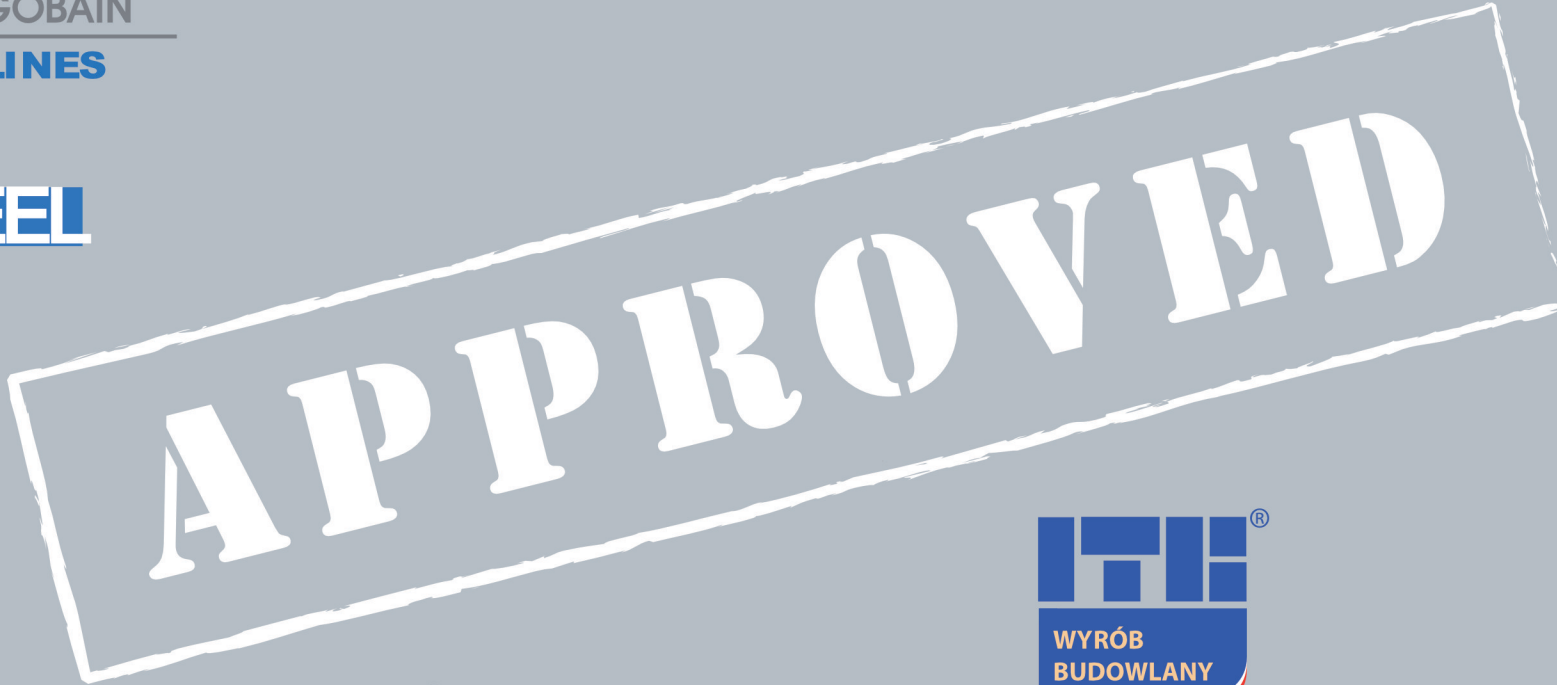


Swiss quality





ArcelorMittal



RELIABLE CONNECTIONS

MARKET APPROVALS



Terminal 3, Dubai International Airport, UAE



Southern Cross Train Station, Melbourne, Australia



Asia World Expo Hong Kong, PRC



Royal Opera House, Production Unit, London, England



Millenium Stadium, Cardiff, Wales



Stadium: MK, Milton Keynes, England



National Centre for the Performing Arts, Beijing, PRC



Baltic Arena, Gdansk, Poland



E-on power station, near Rotterdam, The Netherland



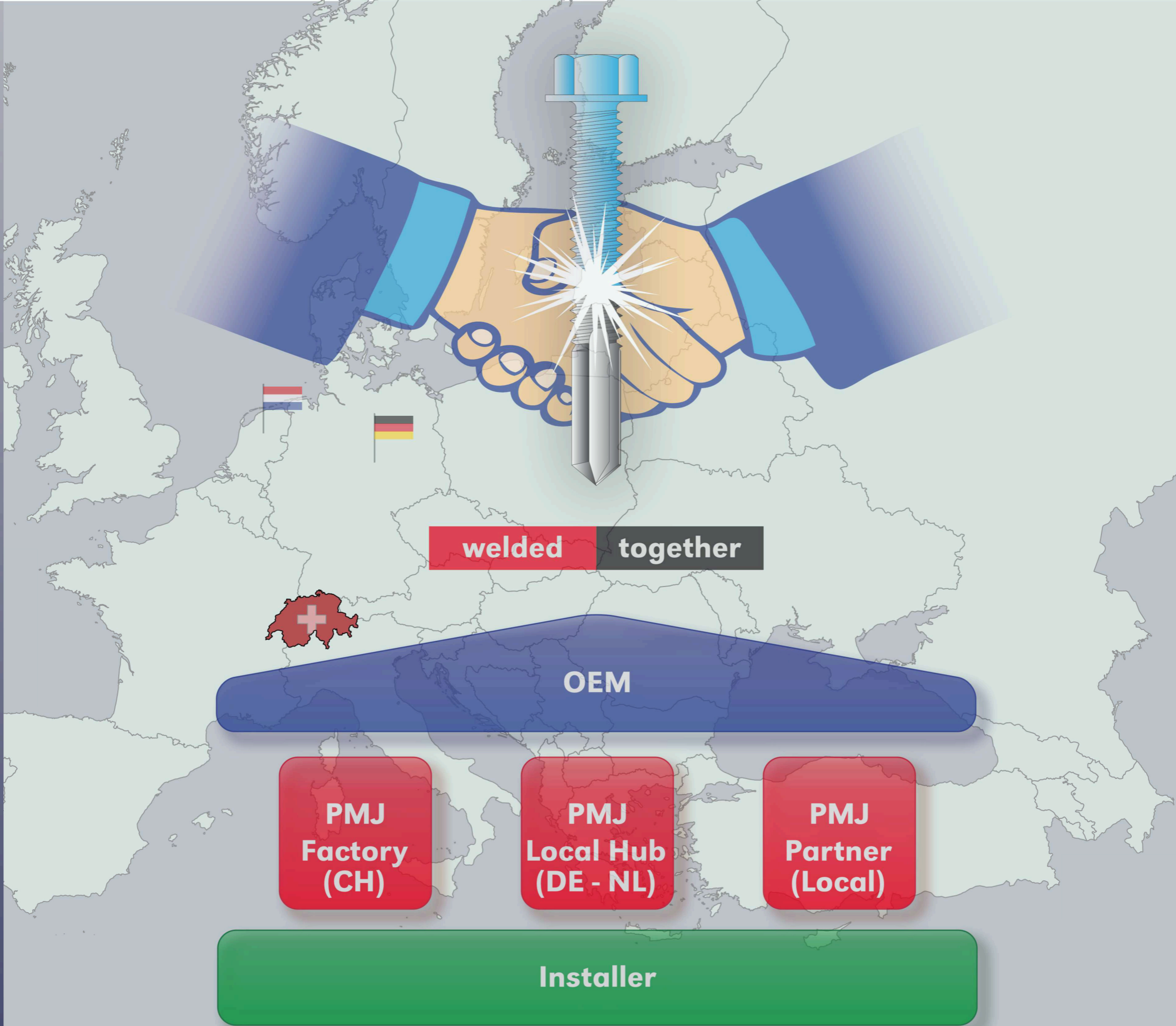
Socar Tower, Baku, Azerbaijan



Hotel Inntel, near Amsterdam, The Netherland



Qatar Science and Technology Park, Doha, Qatar



SUPPLY CHAIN

CUSTOMER SERVICE

# Contacts



## Headquarters

PMJ-tec AG  
Industriestr. 34  
CH-1791 Courtaman  
t. +41 26 684 74 00  
www.pmj-tec.com

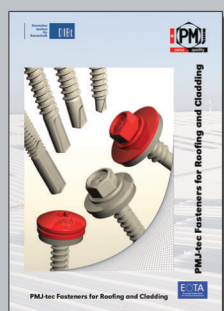
## Market organisations

PMJ-tec GmbH  
Str. d. Jugend 5F  
D-04916 Schönewalde,  
t. +49 35362 / 74 79 - 00  
e. de.info@pmj-tec.com

PMJ-tec BV  
De Gouwe 30  
NL-8253 PA Dronten  
t. +31 321 387 044  
e. nl.info@pmj-tec.com

## Application fields

### Roofing & Cladding



### Rainscreen Cladding



### Drainage Pipes

